

# SmartCam

iOS

English

Now, you can directly monitor your SmartCam camera with your mobile device using the SmartCam app.

Download the application from App Store and install on your mobile devices.

❖ Search keywords for the application: "Samsung SmartCam", "Smartcam", "Techwin".

## 1. Requirements for mobile devices

| Hardware / Operating System | Requirements   |
|-----------------------------|--|
| OS                          | - iOS 7.x, 8.x, 9.x                                    |
| CPU                         | - 1GHz or higher                                       |
| RAM                         | - 128MB or more (recommended),<br>RAM : 50MB (Minimum) |
| Network                     | - Must support Wi-Fi or 3G/LTE mobile communication    |
| Video Codec                 | - H.264  |
| Recommended mobile devices  | - iPhone 5/5S/6  |
| Recommended Tablet PC       | - iPad 3/4   |

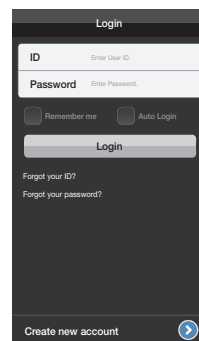
- ! ■ If you use 3G or 4G(LTE) data communication, excessive amount of fees can be billed and may cause data delays or loss. Wi-Fi is recommended.

## 2. Subscription

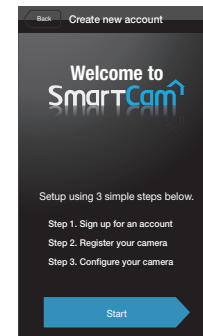
1. Run the downloaded application.



2. Tap <Create new account>.



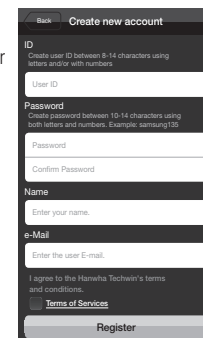
3. Tap <Start>.



4. Enter requested information.

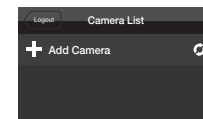
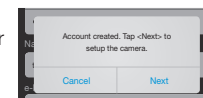
- ✍ ■ Email address is used to search for account ID or password.

5. Read the terms and conditions, and tap <Register>.



6. Tap <Next> when the menu on the completion of a new member registration pops up.

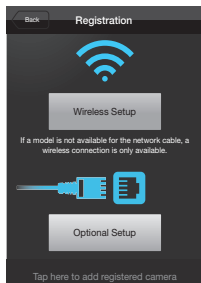
- ✍ ■ Tap <Add Camera> after logging in if you are already a member.



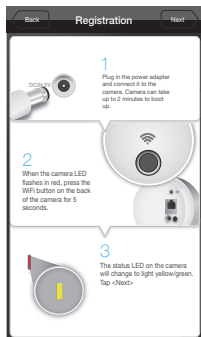
## Wi-Fi Direct connection

- If a model is not available for the network cable, a wireless connection is only available.
- Press the button, "Tap here to add registered camera" when you register a camera being used in another account, in order to register it immediately without setting it.

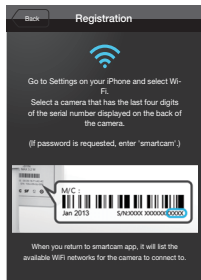
### 7. Tap <Wireless Setup>.



### 8. Tap <Next> after connecting a camera according to the instructions displayed on the screen.

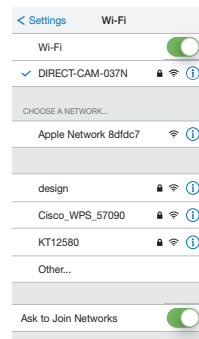


### 9. On the next page, select WiFi Setting on the mobile device.



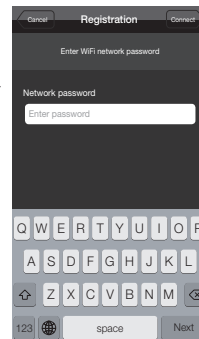
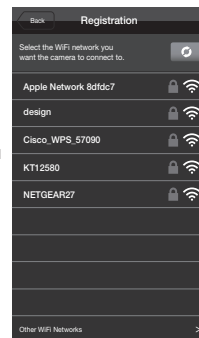
### 10. After selecting a camera to connect, tap <Next>.

- Select a camera that has the last four digits of the serial number on the back of the product.
- Enter 'smartcam' if a password is required.



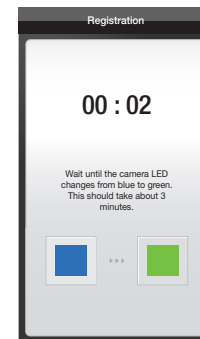
### 11. Select a WiFi router connected to your camera.

- : After entering the password, connect to a WiFi router.
- : Without the password, you will not be connected to a WiFi router.
- Other WiFi Networks : Enter the SSID name, security type and password. If selected, it shows guide on SSID and networking procedures.
- Network password : If you select a WiFi router with the password, then the pop up window will prompt you to enter the password.



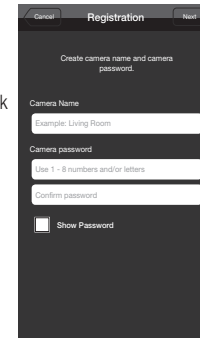
### 12. The LED of the camera will turn into green if a camera is connected to Wi-Fi.

- Camera's LED will blink in blue while searching for a WiFi router. If a connection is made to the WiFi router, the LED will be blue consistently. After a short while, while the camera is connecting to the server, the LED will turn green.



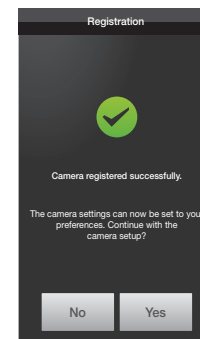
### 13. Enter <Camera Name> and <Camera password> and then click <Next>.

- Click <Show Password> to check your password.



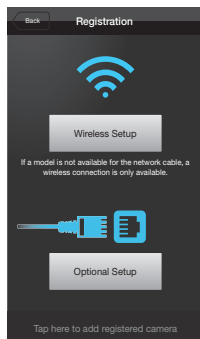
### 14. The camera registration is completed. Select <Yes> for a camera setting. Select <No> to view a live screen.

- If you failed to register wirelessly, please try again over a wireline.
- Cameras may not be registered depending on the settings of the mobile device. In this case, contact the service center.

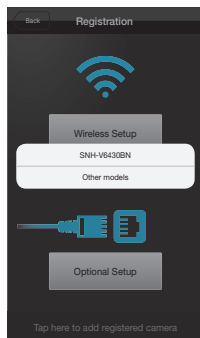


## Cable connection

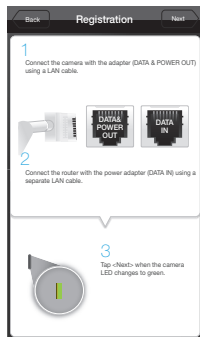
7. Tap <Optional Setup>.



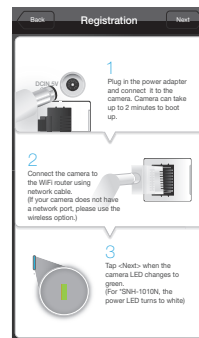
8. Select a camera model to connect.



9-1. For the SNH-V6430BN, connect the camera by following the instructions shown on screen 9-1.

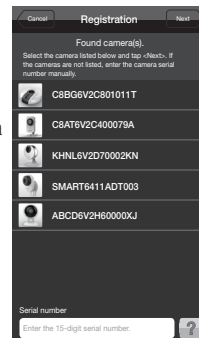


9-2. For other models, connect the camera by following the instructions shown on screen 9-2, and tap <Next>.



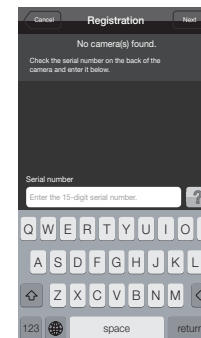
10. Select the camera found and tap <Next>.

- Once the mobile device is connected with the Wi-Fi network like camera, it searches the camera automatically.
- Cameras already registered are not searched.



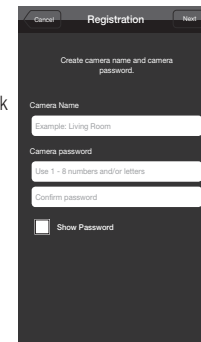
11. If the camera is not detected, please enter the camera serial number manually.

- For camera's serial number location, refer to [?].



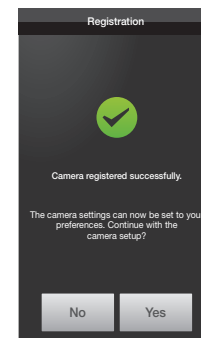
12. Enter <Camera Name> and <Camera password> and then click <Next>.

- Click <Show Password> to check your password.



13. The camera registration is completed. Select <Yes> for a camera setting. Select <No> to view a live screen.

- Cameras may not be registered depending on the settings of the mobile device. In this case, contact the service center.



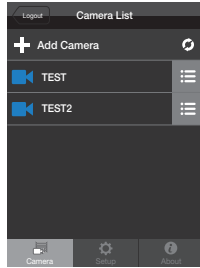
### 3. Camera List

#### Camera Move

1. Move to the <Camera> item. From the listed active cameras, tap the desired camera's [ ] on the right.



- You cannot monitor an inactive camera.
- For a Wi-Fi Direct camera, you can set the wireless network by selecting an inactive camera.



2. Live, Event, Playback and Setup icons will be displayed.

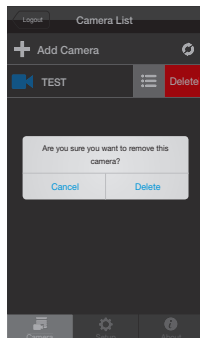


- The supported functions may be different depending on the model.



#### Delete Camera

1. If you want to delete a registered camera, slide it from right to left in the camera list.
2. Tap <Delete>.

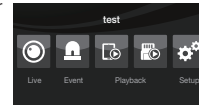
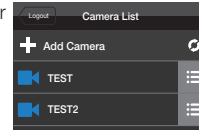


### 4. Live Video

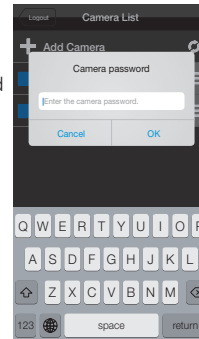
1. Tap the desired camera's [ ] or tap the <Live> icon.



- If there is the latest version of firmware, when you make a live video connection, a pop up will appear so that you can update your camera's firmware.

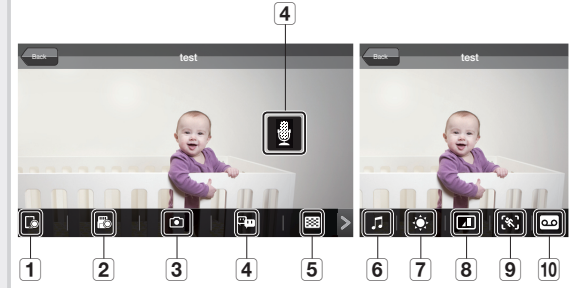


2. Enter the <Camera password> for the camera selected. This is the same camera password you created at the time you registered the camera. Within 20 seconds, it will start streaming.



- According to the network service provider's policy, or the network connection status, it may take a while to load.

#### Live Video

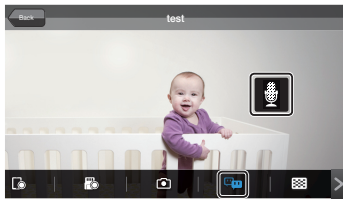


| No. | Description  |
|-----|--|
| 1   | <b>Phone recording</b><br>The user can save the video in <Manage saved video clips> in Settings.   |
| 2   | <b>SD Save</b><br>A user can manually save the video in the SD card.<br>If the Overwrite SD Card option is disabled, it is impossible to record if the remaining free space is less than 10% of the total storage.   |
| 3   | <b>Capture</b><br>You can capture and save a still image from the video.   |
| 4   | <b>Two-way Audio</b><br>The microphone for two-way audio between cameras and mobile devices is activated.<br>Refer to the bidirectional audio function.  |
| 5   | <b>Select a profile</b><br>Shows the profile of the currently connected video. Tap if you want to switch to a different profile.<br>For a video, you can select low/mid/high model profiles.<br>For more information about the resolution of each profile, frame rate and recommended bandwidth, please refer to the user manual.<br>High definition video may not be available depending on the wireless network speed, mobile terminal performance and/or your Internet service provider's policy. In this case, the video is displayed in relay mode. For more information, please refer to "Relay Mode". |
| 6   | <b>Melody</b><br>The selected melody will be heard through the camera speaker.   |
| 7   | <b>Brightness control</b><br>Adjusts the screen brightness.  |
| 8   | <b>Flip control</b><br>Flips the video image.  |

| No. | Description   |
|-----|---|
| 9   | <b>Motion zone</b><br>It detects motion within the area set by the user. <ul style="list-style-type: none"> <li>Refer to the motion zone functions.</li> </ul>                                    |
| 10  | <b>Audio playing</b><br>A user can record audio and play the recorded audio through the camera speaker. <ul style="list-style-type: none"> <li>You can record a max of 10 audio files.</li> </ul> |
|     | <b>IR Lighting</b><br>If you select <Night Vision> in general settings, IR lighting will operate for two minutes.   |

- ! The SNH-V6430BNH model does not support the speaker, interactive audio function and melody functions.
- The supported functions may be different depending on the model.

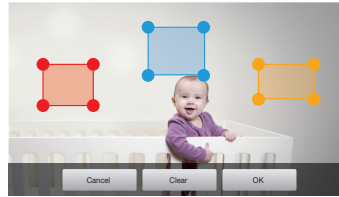
## Two-way Audio



- Tap on the Two-way Audio icon.
- The Mic icon will appear.
- Talk while pressing down the mic icon. The voice can be heard from the speaker on the camera. After finishing talking, press down the icon for two seconds so that the audio information will be transmitted through the network.
- Even if you did not activate the two-way audio function, you can receive the audio sound of the video. In addition, the microphone setting should be at least 1 or higher if you want to use the two-way audio function.

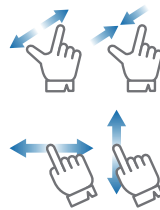
- ! When there are multiple users logged on to the camera, first person who tap the Talk icon will have the control.
- While the bidirectional audio is on, you need to tap the bidirectional audio icon again to cancel the function.
- In relay mode, there is no audio. For more details, refer to "Relay Mode".

## Motion zone



- Tap the motion zone icon.
- Connect to the motion zone mode.
- After touching the video, drag it to set the area.
  - You can set a max of three motion zones.
- If you want to run the motion zone in the area set, tap <OK>.
  - Motion is detected only in the set area.
  - Motion zone function only operates if motion detection is activated. In <Setup> - <Event>, set motion detection.
- To delete the set area, press <Clear> and <OK>. If you want to exit the motion zone setting mode, tap <Cancel>.
  - If you delete a motion zone with the motion detection enabled, any motion in the full area will be monitored and detected.

## To control digital zooming



You can also zoom in by pinch open using two fingers on the screen. To zoom out, pinch close on the screen. Touch and hold to drag the screen in any direction to reveal the hidden part of the image if enlarged bigger than the screen.

- ! Current digital zooming level is noted next to the digital zoom box, and digital zooming supports zooming up to x4.

## Relay mode

Function to view the video in a relay mode when the connection is unstable due to poor network conditions. When connected to relay mode, [!] mark will be displayed on the video screen. In addition, sound and high definition image will not be provided to ensure the stability of the connection.

- ! If the router UPnP setting is not set, then a relay mode connection can be made. Depending on the model of router used, a different setting method is used. Refer to the user manual.
- If a camera is connected to the multiple router, or the wired/wireless network environments for camera and mobile device are unstable, a relay mode connection can be made.
- If you have trouble connection to the camera, visit "http://www.samsungsmartcam.com", go to support page, and refer to "Troubleshooting" on it.

## 5. Camera Setup

Tap the <Setup> icon to configure a camera to be monitored.



## General setting

1. Tap <General>.

2. Configure the basic camera settings.

- Camera Name : Camera name is used to enable you to identify the camera.
- Speaker/Mic : Adjust the volume for the camera's built-in mic or speaker.

■ If you set the mic to zero, there will be no live sound and no audio event and also there is no recording in the SD card.

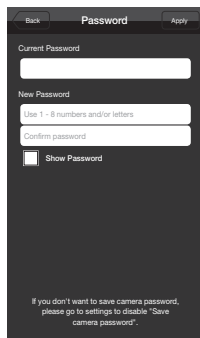
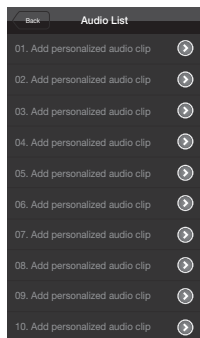
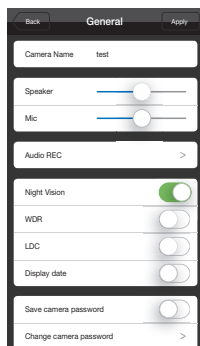
- Audio REC : The voice can be recorded or deleted by users.

- Night Vision : Set the IR lighting. Check <Night Vision> to set the camera to switch to the night vision mode automatically.

■ In the case of SNH-1010N, you can check <Night Vision> for a camera to automatically operate the IR lighting for two minutes depending on the brightness of the neighboring areas.

- WDR : You can compensate for the backlight by making a dark area brighter, and a bright area darker.

- LDC : Sets whether to use the image correction distortion function or not.



- Display date : Displays the date/time on the live video.
- Save camera password : You will be connected to your camera without having to enter the password.
- Change camera password : Change the current camera password.
- Image encrypting : This encrypts the image transmitted.
- status LED : You can turn on or off the LED on your camera.
- Firmware Version : You can check the current version and the latest distributed version and even make updates. If there is the latest version of firmware, when you make a live video connection, a pop up will appear so that you can update your camera's firmware.
- Camera default : Initializes all settings of the camera, except for network settings.

3. Tap <Apply>.

- The supported functions may be different depending on the model.
- When you initialize the camera, data stored in the mobile terminal (voice recording/phone recording) will not be deleted.

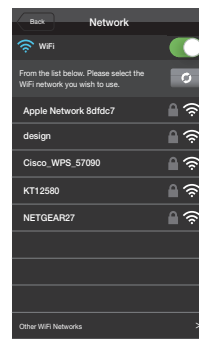
## Network setting

1. Tap the <Network>.

2. Configure the wireless network.

- WiFi : Display the list of WiFi router that you can use.

- If the Wi-Fi receiving sensitivity is poor, receiving a video may not work properly. Move the location of the camera to adjust receiving sensitivity.

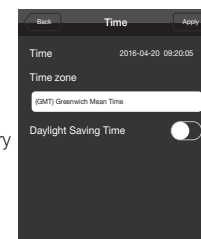


## Time setting

1. Tap <Time>.

2. Set the camera's clock.

- Time zone : Select your region.
- Daylight Saving Time : Check this option if you live in a country or region where DST (Daylight Saving Time) is applied.

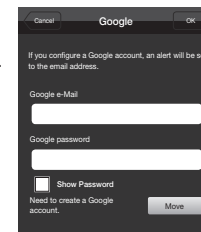
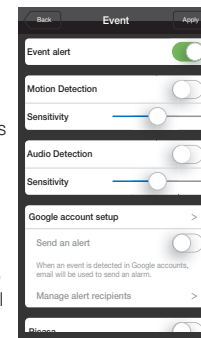


## Event setting

1. Tap the <Event>.

2. Set your event items.

- Event alert : Sends a notice to the website and mobile terminal when a motion/audio is detected.
- Motion/Audio Detection : Specify whether to trigger the alarm or not, and specify the sensitivity. The higher the sensitivity is, the subtler motion/audio events will be detected.
- Google account setup : Sends a notice to a designated email account when an event is detected via a Google account.
- Send an alert : Sends an alert via email when motion/audio is detected.



- Manage alert recipients : Add/Delete an email address to which an alarm will be sent.
- Picasa : Sends event images to the user's Picasa account.
- Google Drive : A 30-second video clip is uploaded automatically to the user's Google Drive account.

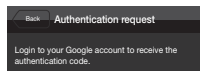
### 3. Tap <Apply>.

- ! The supported functions may be different depending on the model.

## Requesting Google account authentication

You can use Picasa/Google Drive by requesting authentication.

### 1. Sign in with your Google account.



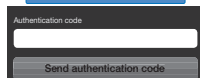
Sign in with your Google Account



Email  
Password

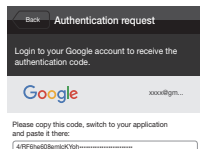
Login

### 2. Tap <Allow>, then an access code will be created.



### 3. Tap <Send authentication code>.

Picasa/Google Drive settings are complete.



Please copy this code, switch to your application and paste it there:

4FF9he008emkCYob

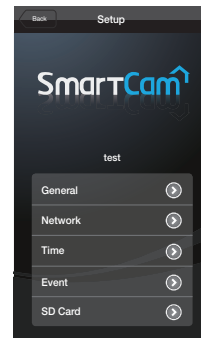


## SD card setting



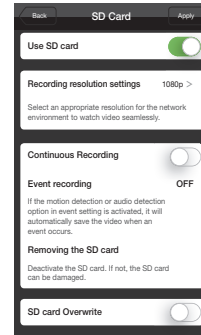
- It is applicable to a model that supports SD cards.
- You need to purchase an SD card if you want to use it.
- Note that inserting an SD card which has been used for other purposes into the camera may delete the data.
- Before removing the SD card, deactivate the Use SD card setting. If not, the SD card can get damaged.

### 1. Tap <SD Card>.



### 2. Set the SD card item.

- Use SD card : Determines whether to use an SD Card or not.
- Recording resolution settings : Sets the image quality of the video to be stored on the SD card.
- Continuous Recording : Video is saved regardless of the event that occurs.
- SD card Overwrite : If the SD card capacity is insufficient, then it will automatically start overwriting the oldest data.
- Status : Check the remaining capacity of the SD card.
- Format : Delete all the data in the SD card.



### 3. Tap <Apply>.

## 6. Event List

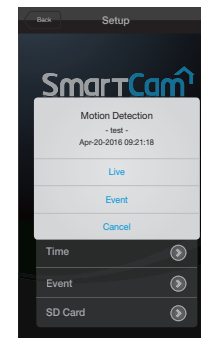
### 1. Tap the <Event> icon. Displays an event when a motion/ audio is detected.



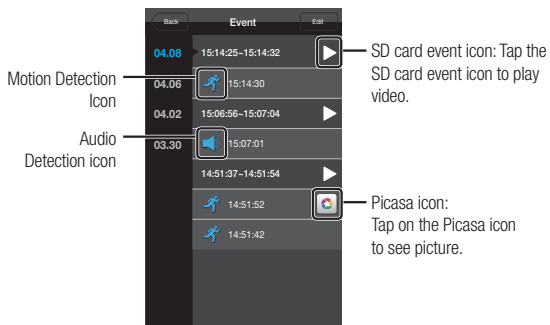
- Displayed when <Event alert> is selected in the event settings.




- You will get a notification prompt when event is detected by the camera.




- Events detected are saved on the server and are displayed in the event list in order of their occurrence.

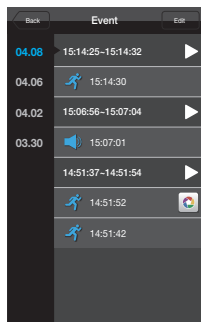


-  If the model does not support the SD card, you can view the video by tapping the Google Drive icon.
- The supported functions may be different depending on the model.
- You can view the video only when logged in to the same Google Drive/Picasa account used for the camera.

### Deleting All Events

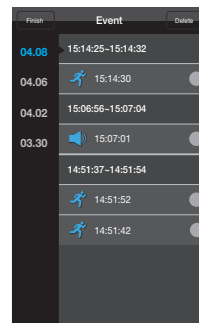
- Tap <Edit>.
- Tap <Delete All>.
- Tap <Yes> to delete all events.

-  When you delete all events, events stored on the SD card will not be deleted.



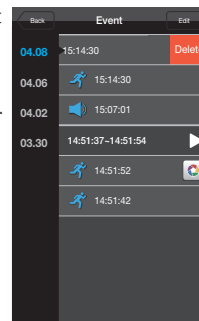
### Delete a Selected Event

- Tap <Edit>.
- Tap <Delete selection>.
- Select an event to delete and tap <Delete>.
- Tap <Yes> to delete the event.



### Deleting Each Event

- Slide an event to delete from right to left.
- Tap <Delete>.
- Tap on <Yes> to delete the event.



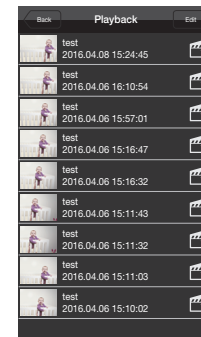
## 7. Playback

### Phone Recording



- Tap the <📷> icon.

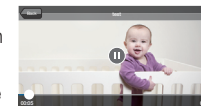


- The list of manually recorded videos saved in the SmartCam app is displayed.




- Tap the video you want to play, and then the video that has been selected will be played.

-  : You can play or pause the video.
-  : Drag the time bar and play the video at the desired time.



- You can save recorded videos in the SmartCam folder of the mobile terminal by tapping the <📷> icon.


-  If you download a file, you can play the video on a video player. But, if the video player has no codec installed to support the video, the video won't be played smoothly so please install the codec that supports H.264 and G.711 first.



## SD Save

- Continuous recording automatically saves video to SD memory every five minutes.
- You can manually record the live screen using the Save to SD button. If you switch to another screen without turning it off, video will be saved for additional 30 seconds before stopping.
- Event recording saves motion or audio for thirty seconds and if motion or audio is detected again in the meantime, the amount of saving time is extended.
- If a manual/event recording occurs during continuous recording, the manual/event recording video may be split into 5-minute segments.

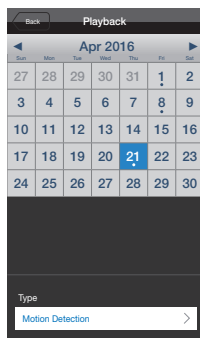
## SD Playback


1. Tap the  icon.

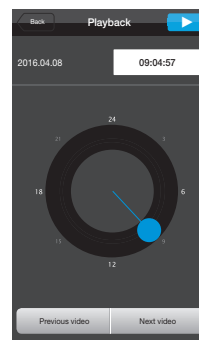
- It is applicable to a model that supports SD cards.






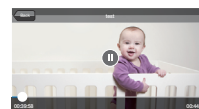
2. Searchable dates are displayed on the calendar. Tap the left/right < > button to select between year/month in the top of the calendar to move to the previous or next month.
3. Select the desired date of search.
4. Select an event type that you want to search.
  - You can select a saved video type in the playing list.





5. On the screen, a circular shaped timeline (24 hours) will be displayed. The time zone with the search data is classified by colors.
6. Check the timeline and drag it to the desired playing time [  ] to set the video playing start time or enter the time on your own.
  - Previous/Next video : Move to the previous/next video to the selected video.



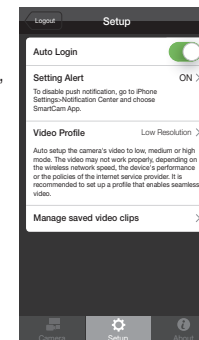
7. Tap the <  > button. Play the video data.
  -  : You can play or pause the video.
  -  : Drag the time bar and play the video at the desired time.



-  The camera supports a high definition recording profile.
- A recorded video may not be played seamlessly depending on the wireless network speed, mobile terminal performance and/or your Internet service provider's policy.
- It is not possible for the same recorded video to be played by 2 or more users simultaneously.
- In an environment in which the live screen is connected to the relay mode [  ], the play function is not supported.

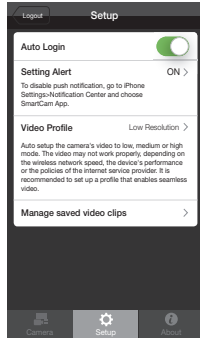
## 8. Auto Login Setup

1. Move to the <Setup> item.
2. If you activate <Auto Login>, then when the app is terminated, you can set the app to automatically log in.

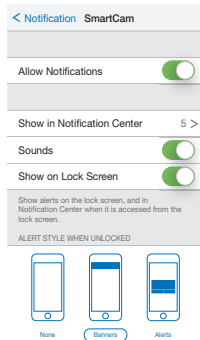


## 9. Alarm setting

1. Move to the <Setup> item.



2. From pop-up and push notice, you can select the SmartCam notice on the Setting menu of the mobile device.



## 10. Other Settings

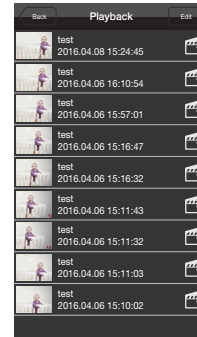
Move to the <Setup> item.

### Select a video profile

Auto setup the camera's video to low, medium or high mode. The video may not work properly, depending on the wireless network speed, the device's performance or the policies of the internet service provider. It is recommended to set up a profile that enables seamless video.

### Manage saved video clips

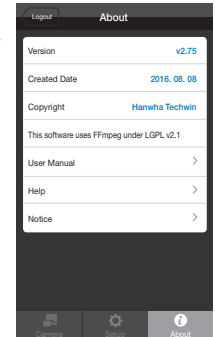
You can download files saved in the SmartCam app to a mobile terminal or delete them.



## 11. Info.

### Checking the S/W info

1. Move to the <About> item.
2. You can check the information of the currently installed software.



### User Manual

1. Move to the <About> item.
2. Tap <User Manual> and a user manual is provided.

### Help

1. Move to the <About> item.
2. Tap <Help> to refer to Q&A about SmartCam.

### Notice

1. Move to the <About> item.
2. Tap <Notice> and you can check notices related to the SmartCam.