



Quick Start Guide



If you have any questions or need help installing your new product please contact our free technical support.

Telephone : 1-877-349-3149

9am - 9pm EST, Monday - Friday

- ✓ Please visit www.samsungsmartcam.com for full owner's manual, mobile app manual and FAQs.

Smartphone / Tablet Setup

This option allows you to setup the camera using Android or iPhone.

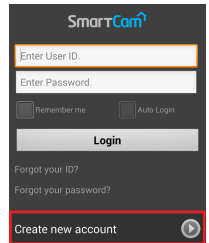
1. Make sure your smartphone is on the same Wi-Fi network as the camera.
2. Go to the Apple App store or Google Play Store.



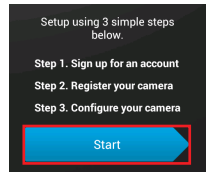
3. Search for "**Samsung Smartcam**" and download the app to your device.



4. Start the smartcam app and tap **<Create new account>**.



5. Tap on **<Start>** and follow the setup wizard to complete the camera setup.

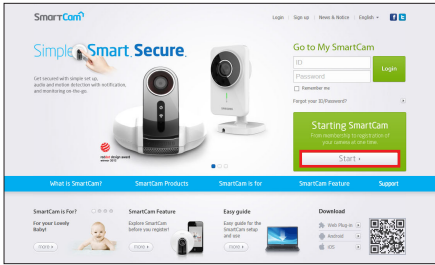


- ✓ When registering your account, please use your valid name and email address as it is used to retrieve your log-in information.

Alternate Option : Setup using PC or Mac

This option allows you to setup the camera via computer.

1. From your PC, launch your web browser.
 - ✓ **Compatible Browsers**
Windows : Internet Explorer, Chrome, FireFox
Mac OS : Safari, Chrome, FireFox
2. Go to <http://www.samsungsmartcam.com>.
3. Click <**Start**> to create account and set up the camera.



- ✓ You need to install the plug-in to start the camera setup wizard.
4. Follow the camera setup wizard to complete the camera registration.
 - ✓ When registering your account, please use your valid name and email address as it is used to retrieve your log-in information.

